



OPTICAL FIBER FUSION SPLICER

AI-7

PRODUCT MANUAL

www.signalfiresplicer.com

SIGNAL FIRE TECHNOLOGY CO., LTD.





OPTICAL FIBER FUSION SPLICER

OPTICAL FIBER FUSION SPLICER



NEW PRODUCT LAUNCH

CLASSIC MASTERPIECE



OPTICAL FIBER FUSION SPLICER

Signal Fire AI-7 use the latest core alignment technology with auto focus and six motors, it is a new generation of fiber fusion splicer. It is fully qualified with trunk construction of medium and short distance, FTTH project, security monitoring and other fiber cable splicing projects. The machine uses industrial quad-core CPU, fast response, is currently one of the fastest fiber splicing machine in the market; with 5-inch 800X480 high-resolution screen, the operation is simple and intuitively; and up to 300 times focus magnifications, making it is very easy to observe the fiber with naked eyes. 8 seconds speed core alignment splicing, 18 seconds heating, the working efficiency increased by 50% compared to ordinary splicing machines. Under the conditions of rigorous testing, the performance is still outstanding; toolbox is small, exquisite, durable, and with unique bench design. The design of operating platform reflects the humanistic care; unique lighting design, it is convenient for night construction or repair. Screen brightness is adjustable and it is convenient for outdoor sunshine environment operation. The core parts are using imported brands, aviation metal body material with exquisite details. With the combination of advanced technology and design, the new generation of optical fiber fusion splicer will bring you a reliable and comfortable user experience.

MASTERPIECE

HIGH-END LUXURY



OPTICAL FIBER FUSION SPLICER

Six motors
Core alignment

Disassembly free three-in-one fiber holder

8 seconds fast splicing

300 times magnification auto focus

18 seconds fast heating

7800mAh large capacity battery



METAL BODY AESTHETIC DETAILS



OPTICAL FIBER FUSION SPLICER

• 21 patent results

Automatic heating

5 inch display

Simultaneously align fibers

Loss display

Can charge the phone

Protective case



LED light

Convenient for night operation

Battery press & remove

METAL BODY

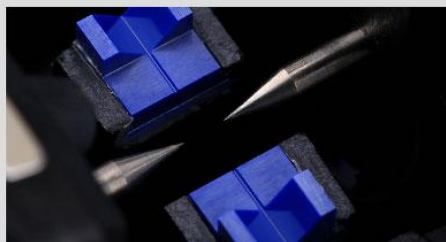
AESTHETIC DETAILS



OPTICAL FIBER FUSION SPLICER

PRODUCT DETAILS

Factory Address: No. 2-4 Qingsong Zone, Jiaxing Industrial Park, Qingsong District, Chengde, China / Factory Address: Hubin Qingsong Zone, Jiaxing Industrial Park, Qingsong District, Chengde, China

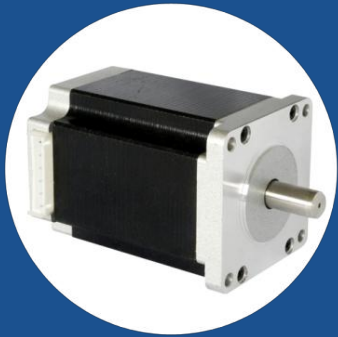


EXQUISITE DETAILS

Factory Address: Hubin Qingsong Zone, Jiaxing Industrial Park, Qingsong District, Chengde, China / Factory Address: Hubin Qingsong Zone, Jiaxing Industrial Park, Qingsong District, Chengde, China



CORE PARTS QUALITY ASSURANCE



Siemens stepper motor

Roth ROUST linear guide

Sanyo lithium battery

Aviation metal material

THE TOOLBOX

COMES WITH A STOOL TO FACILITATE THE CONSTRUCTION WORKERS.



OPTICAL FIBER FUSION SPLICER



Remove the stool



Do not need to take out the splicer machine from the toolbox while working.

Fiber cleave operator station

Two layers



Stool can bear
100kg



Lighting for splicer

Convenient for night operation

W e a r e s o h a r d o n l y f o r y o u



INDUSTRIAL QUAD-CORE CHIP CPU



Synchronous
operation

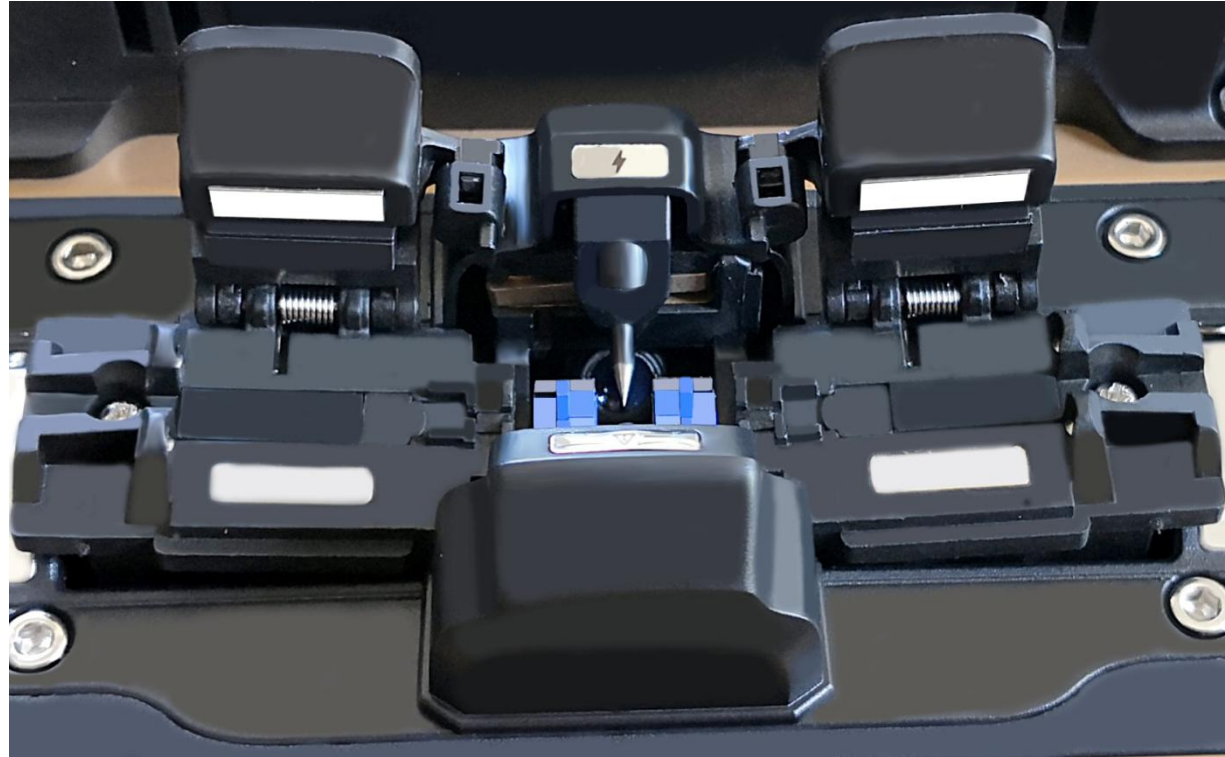
speed
response

no jammed

super
experience

3 IN 1 FIBER HOLDER

SM, MM, bare fiber, pigtail, rubber-insulated, multi
fiber cable



THE BATTERY POPUP AUTOMATICALLY



7800 mA high-capacity
lithium battery

- charging time \leq 3.5 hours
- continuous splicing and heating about 200 times



Press to popup
the battery

CAN CHARGE THE PHONE

Intimate care, just understand
you



If your phone is out of power at outdoor, our machine can charge your phone, ensure you can contact your family members or colleagues in time.

Show good performance in plateau,
desert, and extreme cold environment



BASIC PARAMETER

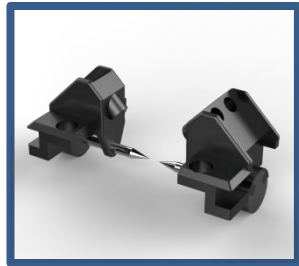


Fiber alignment	Core/cladding alignment / Manual alignment	Built-in lighting	easy for night operation
Splicing time	8S	Tension Test	Standard 2N
Heating time	18S	Fiber holders	3 in 1 fiber holder, SM, MM, bare fiber, pigtail, rubber-insulated, multi fiber cable
Heating mode	Automatic heating (Preheating)	Magnification	300 for X or Y view, 150 for X or Y view
Focus mode	Six motors Auto focus	Screen	5 inch TFT color display
Applicable Fibers	SM(G. 652&G. 657)、MM (G. 651)、DS(G. 657)、NZDS (G. 655)	Splicing Mode	Normal / high precision splicing
Splice Loss	0.025dB (SM)、0.01dB (MM) 0.04dB (DS/NZDS)	Splicing method	Fully automatic、 Step by step splicing
Control technology	Real-time control and calibration of fusion ARC	Splicing record storage	Synchronize to the phone, the server to cloud storage unlimited
Return loss	Better than 60DB	Built-in battery	7800 mA high-capacity lithium battery, charging time \leq 3.5 hours, continuous splicing and heating about 240 times
Fiber diameter	Cladding Diameter: 80-150 μ m Coating Diameter: 100-1000 μ m	Power supply	Input AC100-240V 50 / 60HZ, output DC13.5V / 4.8A, the current power mode can be identified, real-time detection of battery power
Fiber Cleave Length	Coating less than 250 μ m: 8-16mm Coating less than 250-1000 μ m:16mm	Operating Conditions	Temperature: $-15 \sim +50$ $^{\circ}$ C, humidity: <95% RH (no condensation) Working altitude: 0 \sim 5000m. Resist max. wind speed: \leq 15m / s
Software updates Length	Automatically update、 Update by a key	Shrinkable tube	60mm、 50mm、 40mm、 25mm
Boot time	1 second	Product	Waterproof, dust proof, shock-resistant

Accessories in the tool box



Fiber Cleaver



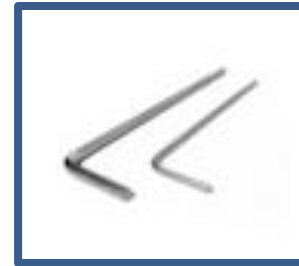
Spare electrode



Wire stripping pliers



Miller stripper



Hex key



carrying case



Fiber for
ARC calibration



Strap



Power Adapter



Alcohol Bottle

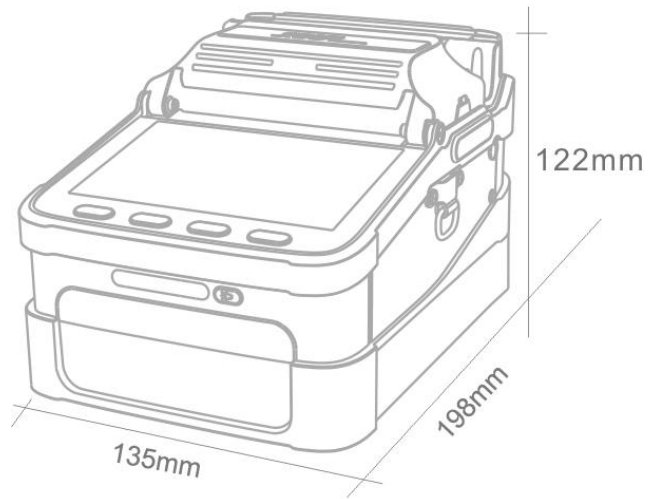


Brush



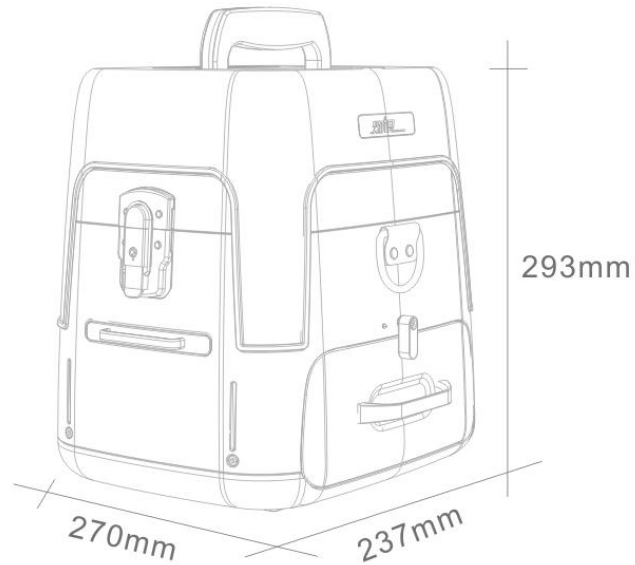
User's manual
Quality Certificate
Warranty Card

SIZE



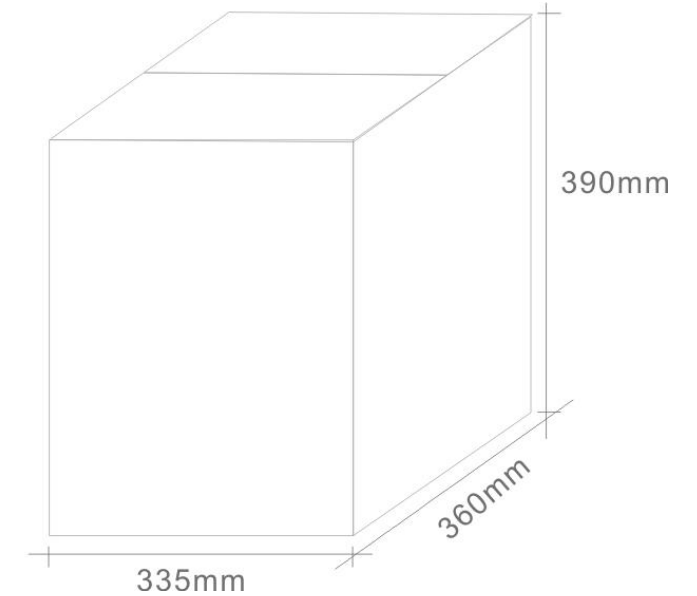
Machine weight

2.08kg (with battery)
1.60kg (without battery)



Toolbox weight

7.1kg (including machine and accessories)



Total weight

8.40kg