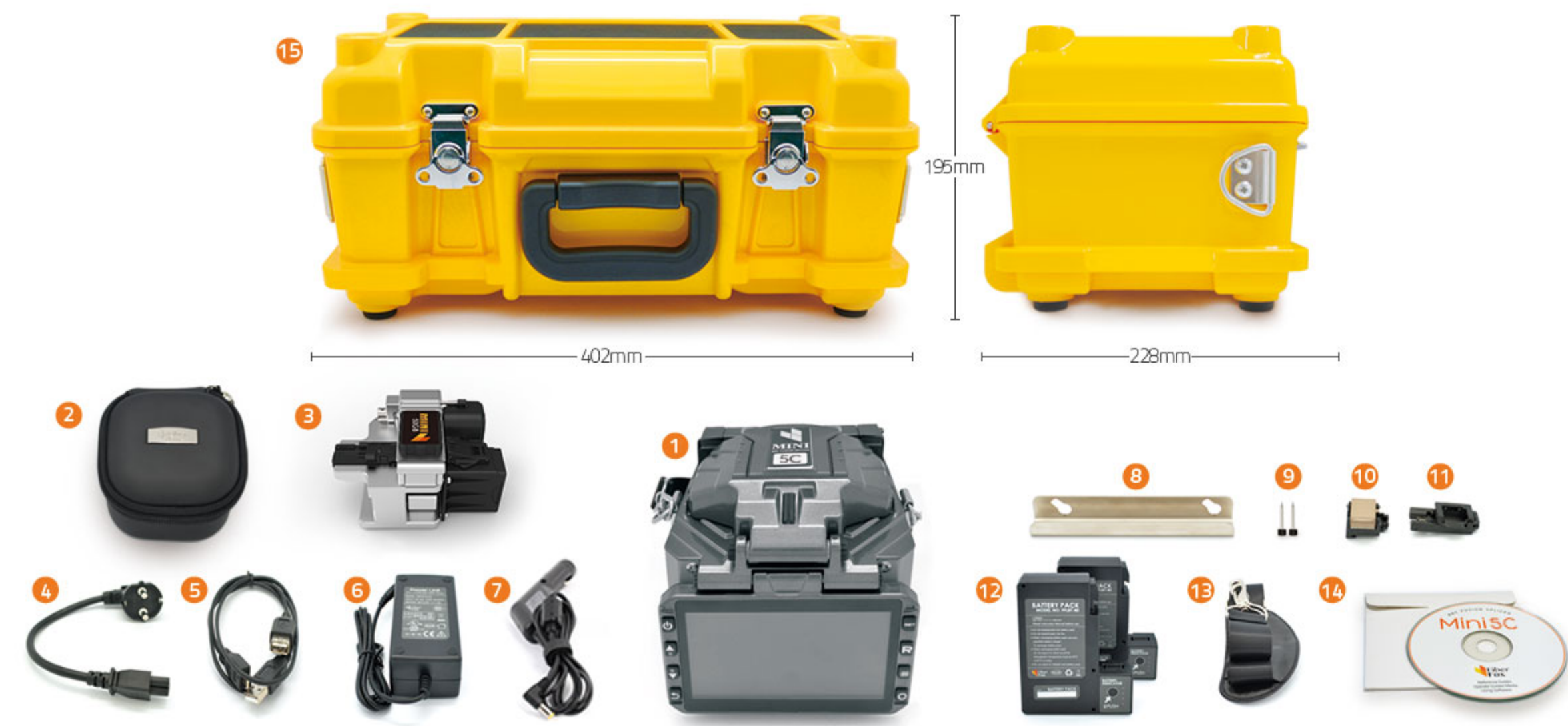


# Package



- 1 MINI 5C Splicer
- 2 Cleaver Pouch
- 3 MINI 50G Cleaver
- 4 Power Cord
- 5 USB Cable
- 6 AC Adapter
- 7 Car Cigar Jack
- 8 Cooling Tray
- 9 Spare Electrode
- 10 Connector Heater Block
- 11 Connector Holder
- 12 2 Battery Packs
- 13 Shoulder Strap
- 14 Operation Manual CD
- 15 Hand Carrying Case

\* FTTH / STANDARD KIT : Different Standard Package      \* Car Cigarjack (Optional)

STANDARD PACKAGE : MINI 5C, MINI 50G, 2 Batteries, Power Cord , USB Cable, AC Adapter, Cooling Tray, Spare Electrode, Shoulder Strap, Manual, Carrying Case, 250-900µm Holder, Stripper

FTTH PACKAGE : MINI 5C, MINI 50G, 2 Batteries, Power Cord . USB Cable, AC Adapter, Cooling Tray, Spare Electrode, Shoulder Strap, Manual, Carrying Case, Universal Holder, Stripper, Connector Heater Block, Connector Holder

# Specifications

Splicing Method	Economical & High Performance Core Alignment Splicer
Average Loss	SM(0.02dB) / MM(0.01dB) / DS(0.04dB) / NZDS(0.04dB) / G.657(0.02dB)
Return Loss	>>60dB
Splice Time	9s average SM / SM 7s Quick mode
Electrode Lifespan	>3,500 arcs
Applicable Fiber	SM(ITU-TU.625, MM(ITU-TU.651), DS(ITU-T G.653), NZDS(ITU-T.655), G657A, G657B 0.25mm, 0.9mm, 2.0mm, 2.4mm, 3.0mm, FLAT(indoor cable)
Cleaved Length	Coating Diameter < 0.25mm = 5-16mm, Coating Diameter > 0.25mm = 16mm minimum
Coating Diameter	100-1,000um
Cladding Diameter	80-150um
Heating Programs	Factory installed mode : 9, User installable mode : 23
Heating Time	Typical 18s
Protection Sleeve	40mm, 60mm, SOC Connector
Data Output	HDMI
Splice Programs	Factory installed mode: 33, User installable mode: 70+
Splice Memory	Up to 2,000 records and 2,000 splice images
Battery	<b>Typical 200 Cycles (Splice &amp; Heat) / single battery / 2 Batteries Standard</b>
Power Supply	AC 100-240V input or DC 9-14V
Monitor	<b>Color 4.3" LCD monitor, with Touch Screen (Tempered Glass)</b>
Cameras	2 CCD camera system
Magnification	XY style : 150 power, X/Y : 300 power
Fiber Display	X/Y or XY, single X.Y
Weight	<b>1.31Kg (without battery)</b>
Size	<b>138mm X 122mm X 124 mm</b>
Wind Protection	The max wind speed 15m/s
Operating Environment	Elevation 0-5,000 meters, -40-80°C, 0-95% relative humidity
Storage Condition	Temperature -40 to 80°C, 0-95% relative humidity, battery -20-30°C
Pull Test	1.96-2.25N (standard)

www.FiberFoxAmerica.com



# Mini 5C

Economical & High Performance



1.31kg

400 cycles

## Economical & High Performance Core Alignment Splicer

Compatible with all leading Splice on Connectors



# Characteristic



Cooling tray included

900  $\mu\text{m}$  fiber holder included

Compatible with all leading Splice on Connectors  
 \*\* AFL, Clearfield, FIS, Fitel, Greenlee, Hubbell, Ortronics and more.

Applicable Cleaved Length  
 - Up to 5mm



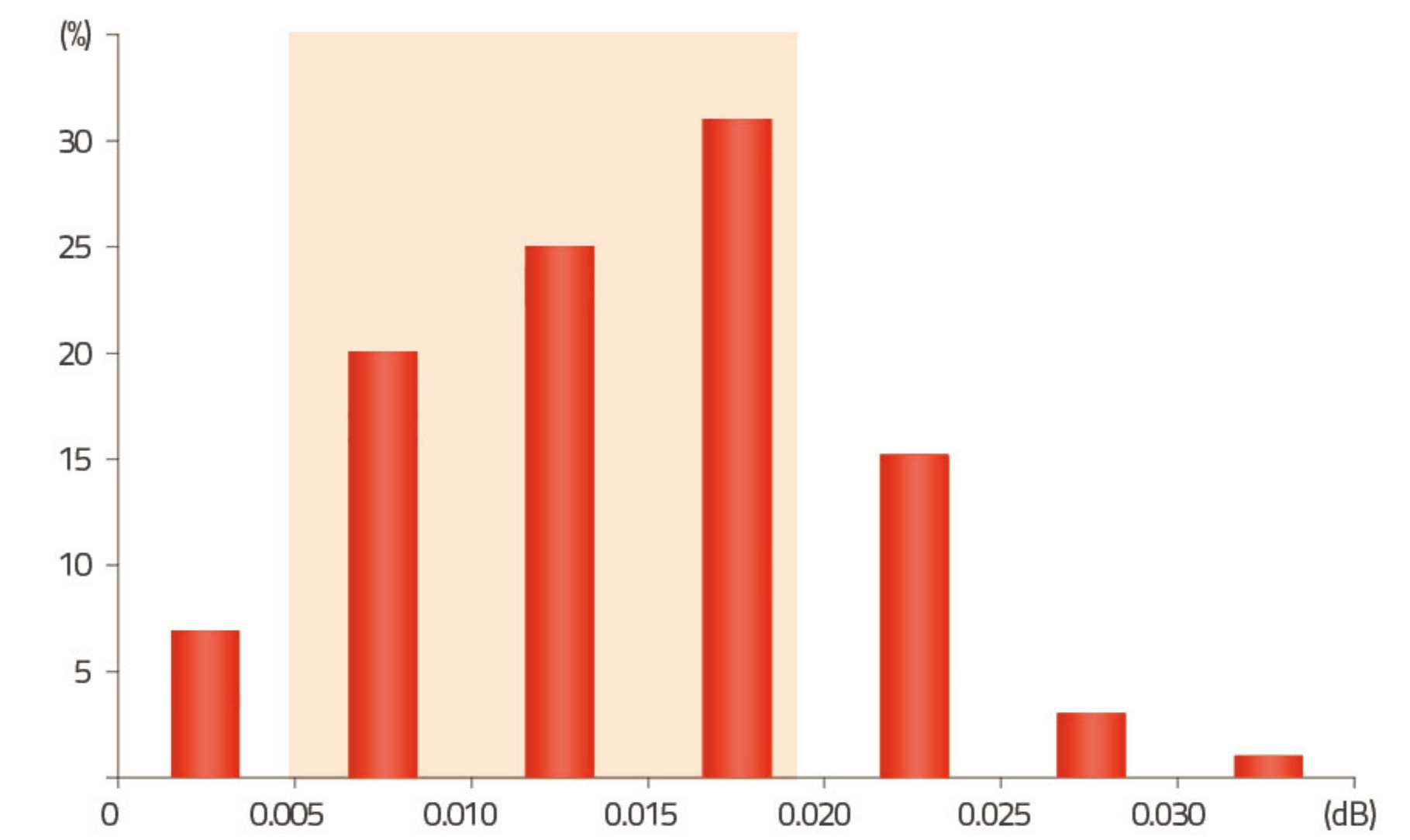
**Industry's First!**

Two Batteries are Included in Standard Package  
 - 5,000mA <Two Battery Standard>  
 - 200 cycles (splicing & heating) with one battery



Full Touch Screen  
 - GUI Interface  
 - Tempered Glass

# 01 Compact & Light Core Alignment Splicer



0.005 - 0.019dB : 75 (%)

# 02 Performance

The most stable loss condition under different environmental conditions

# 03 Durability



Anti-shock

Dustproof

Waterproof

# 04 SOC Compatible